

ODESSA ROAD, FOREST GATE £2,400 Per Month 2 Bed House



Features:

- Two Bedroom House
- Two Double Bedrooms
- Two Bathrooms
- Separate Reception
- Dining Room
- Private Garden
- Holding Deposit: equivalent to one week's rent capped at £400
- Parking Permits Only

An artfully appointed and pristinely polished two bedroom Victorian terrace, with two bathrooms and a private garden with substantial outbuilding. You're perfectly placed too, with Forest Gate station and the Elizabeth line just half a mile on foot.

Your gorgeous rear garden is an elegantly landscaped mix of patio and lawn, secluded with timber fencing, lush foliage, mature greenery and of course that large outbuilding, perfect for home working.

REQUEST A VIEWING
0203 397 2222

E11, E7, E12 & E15
hello11@stowbrothers.com
0203 397 2222

E4 & N17
hello4@stowbrothers.com
0203 369 6444

E17 & E10
hello17@stowbrothers.com
0203 397 9797

E18 & IG8
hello18@stowbrothers.com
0203 369 1818

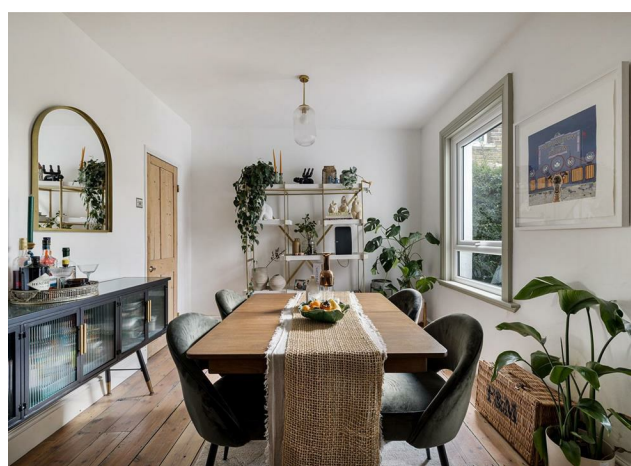
E8, E9, E5, N16, E3 & E2
hellohackney@stowbrothers.com
0208 520 3077

New Homes
newhomes@stowbrothers.com
0203 325 7227

Investment & Development
id@stowbrothers.com
0208 520 6220

Property Maintenance
propertymanagement@stowbrothers.com
0203 325 7228

STOWBROTHERS.COM
@STOWBROTHERS



IF YOU LIVED HERE...

First stop will be your front reception room. Naturally bright with bistro shutters on the bay window, original timber flooring underfoot and a jet black vintage hearth and mantel. To the rear you have a second reception, similarly sized and styled below designer pendant lighting .

To the rear your dual aspect kitchen's a sleek combination of white cabinetry, stone flooring, dark quartz style worktops and mosaic splashbacks, with direct access to that sizeable garden. Upstairs your family bathroom, glorious in royal blue and white metro tilework, sits off your back bedroom. Finally

your handsome 140 square foot principal sleeper features a similarly stylish en suite.

Outside, and the epic greenery of Wanstead Flats, once the favoured playground of Tudor kings and queens, and still some of the wildest wide open space for miles around, is just a third of a mile on foot. Great for a morning run, you can wander for miles here, or simply to your heart's content. Also close at hand is Forest Gate station, just half a mile on foot for direct thirteen minute runs to Liverpool Street.



WHAT ELSE?

- Just five minutes from your new front door, the railway arches along Winchelsea Road form the heart of a bustling social hub, home to an ever evolving range of bars, cafes and restaurants, from The Rookwood Village to the Wild Goose Bakery.
- Drivers will be pleased to know you have resident's only permit parking here, with the arterial North Circular just fifteen minutes away by car.
- Forest Gate's Elizabeth line will also get you directly to Heathrow Airport in less than an hour.

REQUEST A VIEWING
0203 397 2222

FOLLOW US → @STOWBROTHERS
STOWBROTHERS.COM



REQUEST A VIEWING
0203 397 2222

FOLLOW US → @STOWBROTHERS
STOWBROTHERS.COM



Reception Room
10'11" x 10'5"

Second Reception Room
13'1".95'1" x 9'10"

Kitchen
7'4" x 9'5"

Bedroom
14'2" x 10'5"

Ensuite
6'3" x 5'4"

Second Bedroom
14'0" x 9'10"

Bathroom
7'3" x 9'6"

REQUEST A VIEWING
0203 397 2222

FOLLOW US → @STOWBROTHERS
STOWBROTHERS.COM